

**Waterproof, flexible protective coating**

**Lastogum®**

**Under ceramic coverings  
in showers and bathrooms**

**PCI®**

Product Information

**177**

With official test certificates.

### USES

- Liquid area waterproofing to be applied by roller, brush or trowel.
- For indoor use.
- For walls and floors.
- For moisture-resistance grade I and II in accordance with the ZDB leaflet "Notes for the application of waterproofings directly under tiles for indoor and outdoor use".
- Resistance class A1 in accordance with the test principles to issue an official test certificate.
- For wet areas not exposed to pressurised water, such as bathrooms, showers in residential buildings, hotels, old people's homes and hospitals.
- On moisture-sensitive, absorptive substrates, e.g. plasters, plaster slabs, gypsum fibre boards, plaster boards, wooden chipboards, anhydrite screeds in moist and wet areas subject to usual domestic use.
- On absorptive mineral substrates, e.g. concrete, screed, render, aerated concrete, cementitious levelling compounds for walls such as PCI Polycret 5 and/or PCI-Polycret 20 and self-levelling compounds, e.g. PCI Fließspachtel 15 and PCI-Periplan 10 and/or PCI-Periplan 20.



*Application of undiluted PCI-Lastogum to the substrate by roller, brush or trowel.*



## USER BENEFITS

- **Waterproof**, protects moisture-sensitive substrates.
- **Deformable**, compensates tensions, deformations of the substrate, fluctuations in temperature and vibrations.
- **Crack-bridging**, high reliability even with subsequent cracks in the substrate.
- **Ready-to-use**, easy to apply by roller, brush or trowel.
- **\*Two-coloured**, enables easy visual control of the layer thickness.
- **Resistant to lime water**, ensures bonding between protective coating and mortar if the adhesive bed is constantly submerged in water.
- **Solvent-free**, ecologically harmless, can be used without any risk to health.
- **With official Test Certificate by the Technical University of Munich** for interior waterproofing under PCI-Tilefast 6 in accordance with the ZDB leaflet.

## TECHNICAL DATA

### Material

Material base	solvent-free synthetic resin dispersion
Components	1-part
Density approx.	1.5 g/cm <sup>3</sup>
Control colour	*red and/or grey
Marking according to - Ordinance on Hazardous Goods /Road - Ordinance on Hazardous Substances	non hazardous not subject to marking
<i>For further information refer to paragraph Safety.</i>	
Packaging	
*PCI-Lastogum red	8 kg plastic pail 15 kg plastic pail *25 kg plastic pail
PCI-Lastogum grey	4 kg plastic pail 8 kg plastic pail 15 kg plastic pail *25 kg plastic pail
Storage	cool and dry, but frost-free
Shelf life	approx. 12 months

\* Mainland Europe only

## TECHNICAL DATA

### Application

Consumption with 2 coats:

-	moisture-resistance class I (acc. to the ZdB leaflet and/or resistance class A1 acc. to test principles)	approx. 1 to 1.2 kg/m <sup>2</sup> (• approx. 0.75 l/m <sup>2</sup> )
-	moisture-resistance class II (acc. to ZdB leaflet)	approx. 1.5 kg/m <sup>2</sup> (• approx. 1.0 l/m <sup>2</sup> )

Thickness of wet film

First and second coat: min. 0.4 mm each

Coverage	*4 kg pail is sufficient for approx.	8 kg pail is sufficient for approx.	15 kg pail is sufficient for approx.	*25 kg pail is sufficient for approx.
- for one coat (applied by roller, brush or trowel)	8 m <sup>2</sup>	16 m <sup>2</sup>	30 m <sup>2</sup>	50 m <sup>2</sup>
- for two coats (applied by roller, brush or trowel)	4 m <sup>2</sup>	8 m <sup>2</sup>	15 m <sup>2</sup>	25 m <sup>2</sup>

Working temperature +5°C to +30°C (substrate temperature)

Evaporation time after first coat\* approx. 1 hour

Evaporation time after second coat\*  
ready for subsequent tiling approx. 1 to 2 hours

Minimum consumption for two coats approx. 1 to 1.2 kg/m<sup>2</sup>

\* At +23°C and 50% relative humidity. Higher temperatures reduce and lower temperatures increase these times.

### SUBSTRATE PREPARATION

The substrate must be solid, dry (cementitious screed 4%, anhydrite pourable screed 0.5%, measured with the CM meter), clean and free from oil, grease and other residues which should be removed by sand-blasting, brushing or shot-blasting (Blastrac) if necessary. The basically smooth surface must not have any pockets, gaping cracks or ridges. Prime gypsum-based substrates and plaster boards beforehand with undiluted PCI-Primer G. Absorptive mineral substrates are to be primed with PCI-Primer G, diluted 1 : 1 with water. Prime dry, tightened chipboards with Primer W. The primers must be cured prior to the application of PCI-Lastogum.

\* Mainland Europe only

## APPLICATION

- 1** Apply undiluted PCI-Lastogum by roller (lambskin roller), brush (wall brush, float), or trowel to the substrate to cover the entire area. The first coat should be applied with PCI-Lastogum red.\*
- 2** Place PCI-waterproofing gasket (wall) and/or PCI-waterproofing gasket (floor) over pipe culverts and floor drains, PCI sealing tape 120 in corner joints and floor/wall junctions to be integrated in the first coat of PCI Lastogum. Any projecting edges of the fabric are covered by the second coat.
- 3** After the first coat is dry apply the second coat with PCI-Lastogum grey. The first coat should not be visible any more.
- 4** After curing, tiles and flags can be laid with PCI-Tilefast 6 or PCI Tilefast 6-Rapid over PCI Lastogum on vertical and horizontal areas. Calibrated natural stone should be applied with PCI Floorfast 20 Rapid White



**1.** Priming: Prime absorptive mineral or gypsum-based substrates and plaster boards with PCI-Primer g.



**2.** Apply undiluted PCI-Lastogum (red) to the substrate as a first protective coating to cover its entire surface.



**3.** Fix the PCI-waterproofing tape 120 with PCI-Lastogum (red) in corner joints and floor/wall junctions.



**4.** Place PCI-waterproofing gasket (wall) over the pipe connection protruding from the wall and cover with PCI-Lastogum (red).



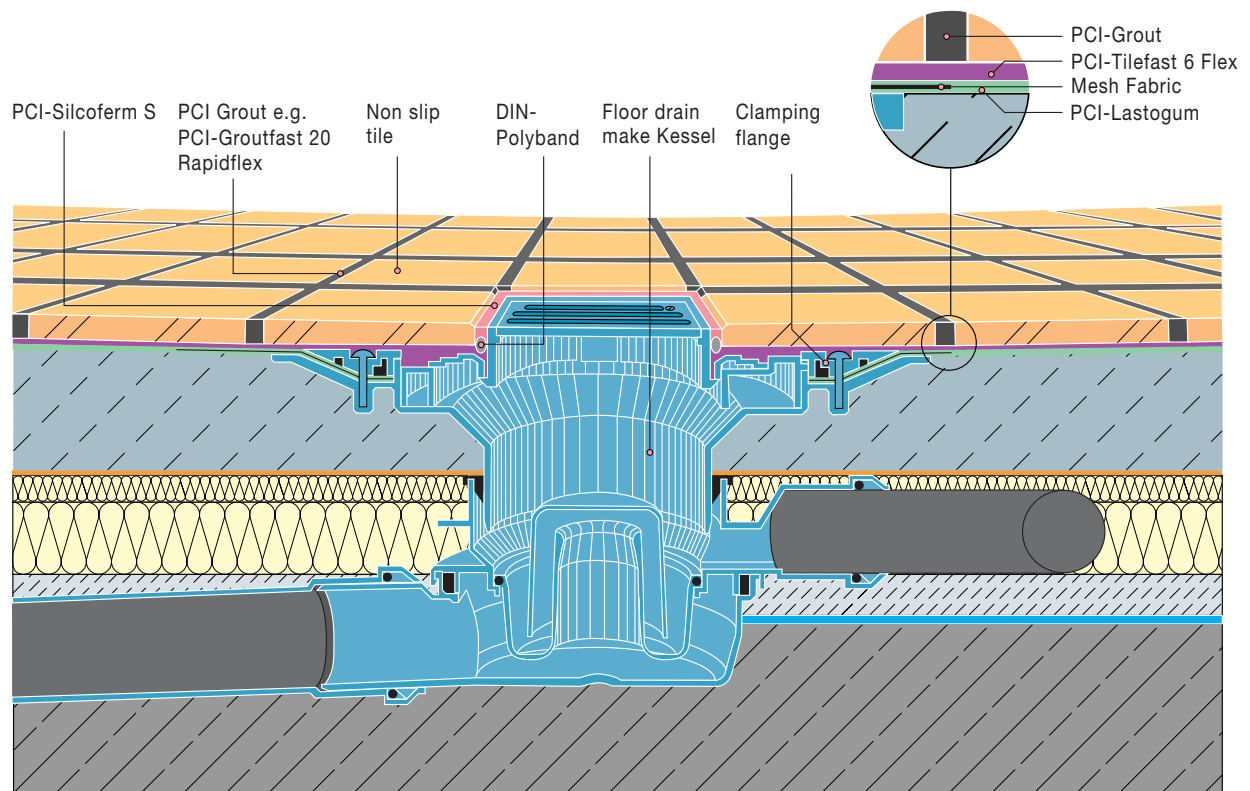
**5.** After an evaporation time of 2-3 hours apply the second protective coating with PCI-Lastogum (grey). The first coat of PCI-Lastogum (red) must not be visible.



**6.** After the waterproofing PCI Lastogum is dry tiles and flags can be laid with PCI-Tilefast 6.

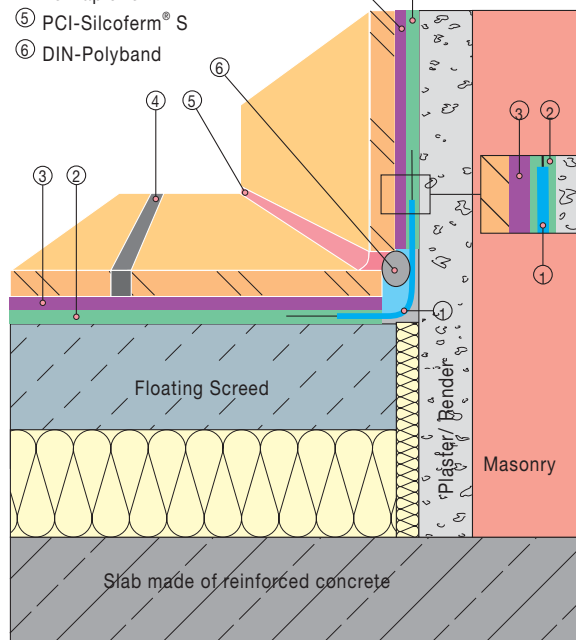
\* Mainland Europe only. 1st coat will be red for control puposes only.

### Detail: Installation of a floor drain



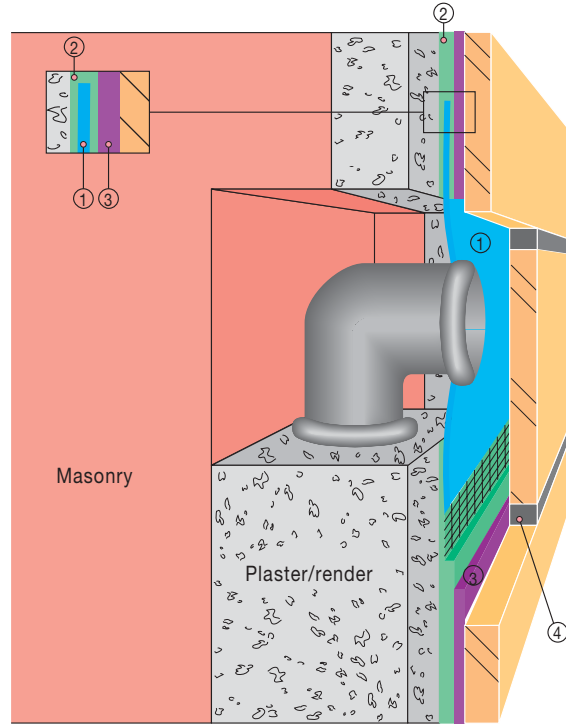
### Detail: Floor/Wall junction

- ① PCI-Waterproofing tape 120
- ② Waterproofing layer: PCI-Lastogum®
- ③ Tile adhesive: PCI-Tilefast 6 Flex on waterproofing layer PCI-Lastogum
- ④ PCI grout, e.g. PCI-Groutfast 20 Rapidflex
- ⑤ PCI-Silcoferm® S
- ⑥ DIN-Polyband



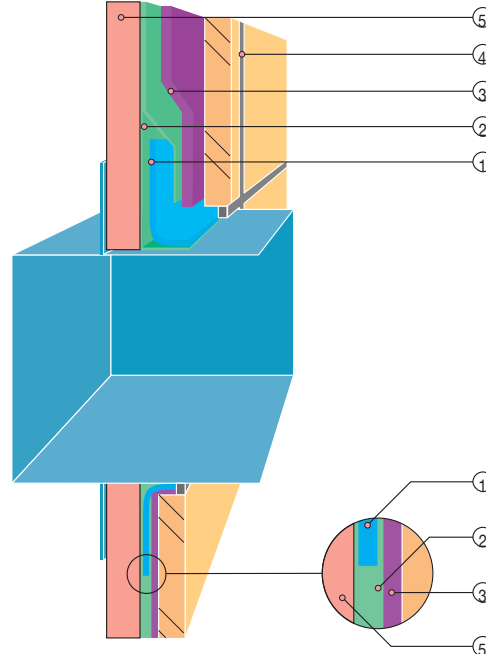
### Detail: Pipe culvert/wall

- ① PCI Waterproofing gasket/wall
- ② Waterproofing layer: PCI-Lastogum®
- ③ Tile adhesive: PCI-Tilefast 6 Flex on waterproofing layer
- ④ PCI grout e.g. PCI-Groutfast 20 Rapidflex



### Detail: Installation of a waterproof built-in wall casing for substructure fittings (e.g. Hansa DAL)

- ① PCI Waterproofing gasket floor
- ② PCI-Lastogum
- ③ PCI-Tilefast 6 Flex
- ④ PCI Grout, e.g. PCI-Groutfast 20 Rapidflex
- ⑤ Plasterboard



## PACKAGING SPECIAL FABRIC TAPES

■ PCI-Sicherheits-Dichtband 120	Special waterproofing tape for waterproof corner and connection joints 50 m roll 10 m roll
PCI-Sicherheits-Dichtecke außen	Fleece-lined special rubber tape for exterior corners
PCI-Sicherheits-Dichtecke innen	Fleece-lined special rubber tape for interior corners
PCI-Sicherheits-Dichtmanschette-Boden	Fleece-lined waterproofing gasket floor
PCI-Sicherheits-Dichtmanschette-Wand	Fleece-lined waterproofing gasket wall
■ PCI-Dichtband Plus	Special glass fabric tape for soundproof waterproofing under ceramic coverings 15 m roll
PCI-Innenecke Dichtband Plus	Special glass fabric tape for interior corners 5 pieces per carton
PCI-Innenecke Dichtband Plus	Special glass fabric tape for exterior corners 5 pieces per carton

### PLEASE NOTE

- PCI-Lastogum is not recommended for outdoor use and waterproofing in swimming pools. For these purposes use the crack-bridging waterproofing slurry PCI-Seccoral 2K.
- Do not apply PCI-Lastogum at substrate temperatures below +5°C and above +30°C.
- Apply plaster and screed to cover the entire surface even around bathtubs.
- The protective coating can be exposed to foot traffic after 2 hours at the earliest when applying two coats.
- \* To enable an easier control of the layer thickness it is recommended to apply the first coat of PCI-Lastogum in red\* and the second coat in grey. The first coat must not be visible.
- If a special guarantee is requested and/or in areas with the moisture resistance grade II (minimum consumption for 2 coats approx. 1.5 kg/m<sup>2</sup>) it is absolutely necessary to apply in two colours.
- Fixtures which can be integrated into the waterproof protective coating PCI-Lastogum by means of the PCI-waterproofing gasket (floor) are supplied by Hansa or DAL. Assimilable thinbed floor drains can be purchased from Kessel.
- The PCI waterproofing gasket (wall) must waterproof around the pipe (not around the plug which will be removed later), otherwise the pipe must be extended beyond the waterproof area by inserting a spacer.
- Tools should be washed with water immediately after use. Once the product has cured it can only be removed by mechanical means.
- Shelf life: approx. 12 months if stored in a cool and dry, but frost-free location.

\* Mainland Europe only.

## SAFETY

### General information on dispersion products

Do not allow dispersion to dry on the skin. Remove dried dispersion with soap and water. Protect eyes if there is risk of splashing. In case of eye contact, thoroughly flush with water. If the eye irritation does not ease off within a few minutes, get prompt medical attention.

*For further information refer to the PCI Material, Safety Data Sheet.*

# PCI<sup>®</sup>

## PCI Construction Systems Ltd

Albany House, Swinton Hall Road,  
Manchester, M27 4DT, England.

Tel: 0161 794 7411

E-mail: [pciconstruction@compuserve.com](mailto:pciconstruction@compuserve.com)

Website: [pci.uk.com](http://pci.uk.com)

Help-line: 0845 458 9105 Tech-fax: 0845 458 9106

*(0845 calls charged at lo rate)*

For International Uses this product is known as  
PCI (Lastogum), PCI can be contacted at the following location:-

### PCI Augsburg GmbH

Piccardstraße 11, 86159 Augsburg, Postfach 102247, 86012 Augsburg.  
Telefon 08 21/59 01-0, Fax 08 21/59 01-372, [www.pci-augsburg.de](http://www.pci-augsburg.de)

In view of widely varying site conditions this data sheet is meant to provide general application guidelines only. Any recommendation or information issued by us constitutes a preliminary and accessory contractual obligation only. Users must satisfy themselves regarding the applicability of the content to their own particular requirements. Please contact our Advisory Service for special requirements. Liability is accepted for incomplete or incorrect particulars in our information material only in the event of intent or gross negligence, without prejudice to claims under product liability laws. All transactions are subject to our Terms of Sale and Supply. Any subsequent publication supersedes this edition. Edition April 2003.



**degussa.**

Construction Chemicals Europe